

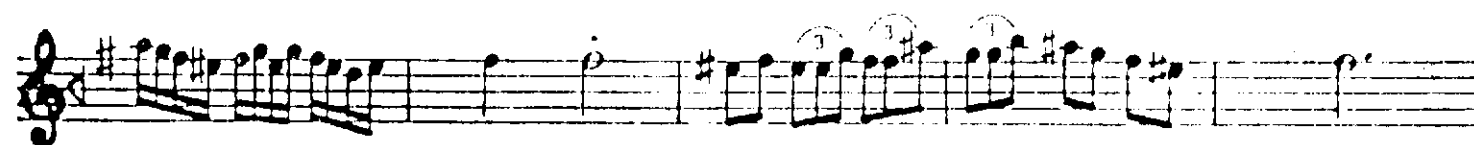
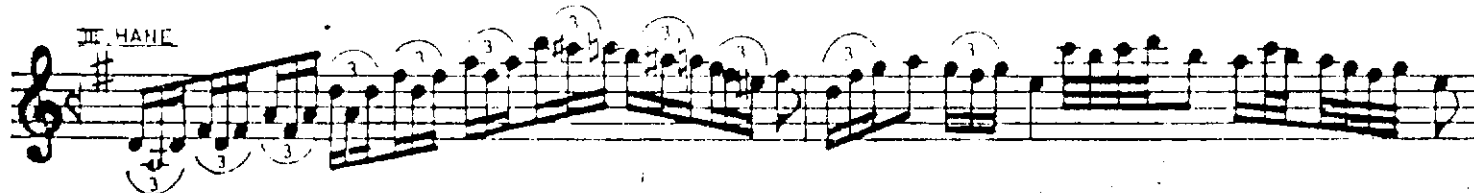
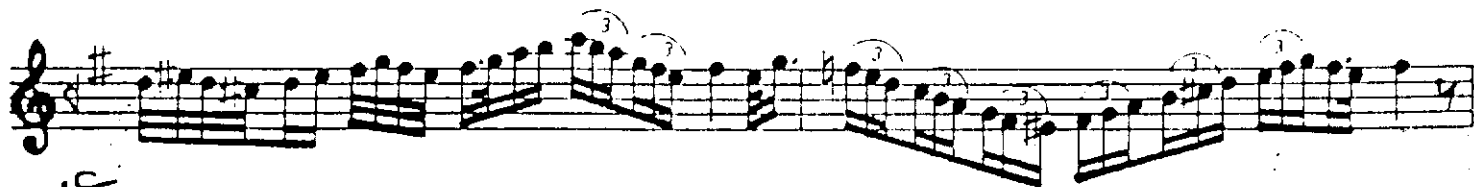
EVİÇ SAZ SEMÂİSİ

AKSAK SEMÂİ

MEHÂNİ YAKAR

$\text{♩} = 120$

I. HANE



This image displays a page of musical notation, likely for a guitar or piano, featuring ten staves of music. The notation is written in treble clef with a key signature of one sharp (F#). The music consists of various note values, including eighth and sixteenth notes, and rests. Numerous triplets are indicated by a '3' inside a circle above the notes. The notation is arranged in a single system across ten staves. The final staff ends with a double bar line and a stylized signature.